

Split Nip

Minimum Quantity: One Set

THE PETCOTHANE SPLIT NIP - DESIGNED FOR TODAY'S HIGH SPEED WEBS

For Presses:

Baker Perkins

Goss

Heidelberg

Komori

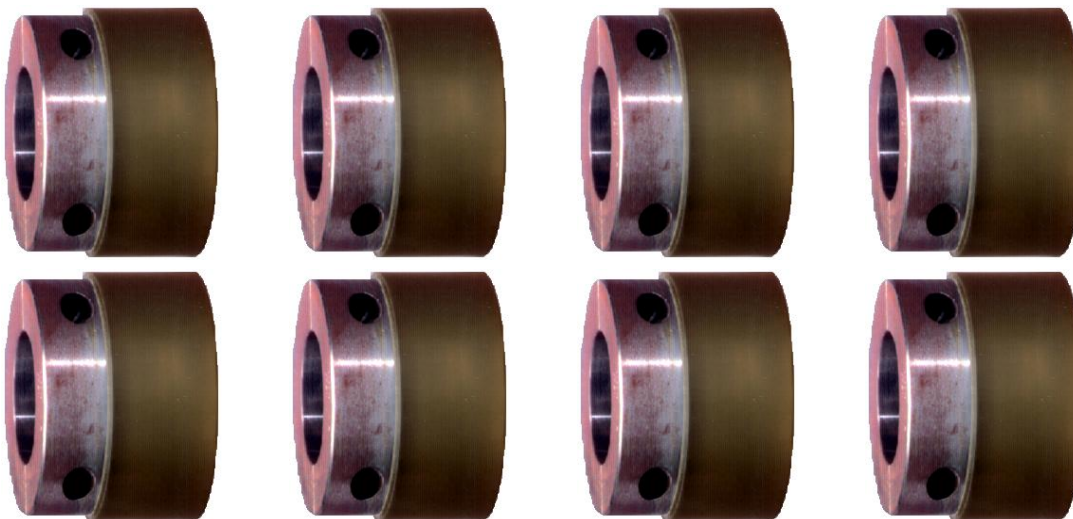
Lithoman

MAN Roland

Mitsubishi

- ▶ Designed for high speeds and heavy nips the covering must maintain its adhesion to the core. We subject each **Split Nip** core to a multiple step pretreat process that guarantees the bond for the life of the **Split Nip**.
- ▶ Every **Split Nip** core is 100% pre-inspected for close bore concentricity, damage, and relationship to splits.
- ▶ The **Split Nip** core split is critical in relationship to the bore diameter and concentricity, and to the diameter of the **Split Nip** covering. We inspect every **Split Nip** core for every function and repair, when possible, to guarantee that when assembled, each **Split Nip** core fits the mandrel like new.
- ▶ The **PETCOTHANE** series of **Split Nip** coverings provides the most durable, stable material available. We precision grind with computer-assisted accuracy each **Split Nip** covering to assure required nip and gain related diameter.

Covering Material: PETCOTHANE
Compound Designation: 905



Revised 12/18/08